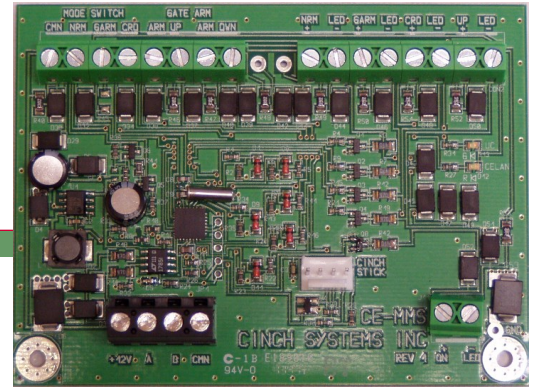


# CeLAN Manual Mode Selector

I-Ce-MMS Rev A. Arp 2012



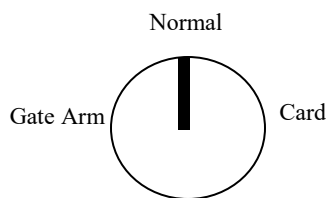
## Overview:

The CeLAN Manual Mode Selector is a CeLAN data bus module that wires directly to the Rampart data bus and barrier control buttons. The Ce-MMS mounts in the master controller or remote controller for mode selection of the vehicle barrier system

Ce-MMS - Manual Mode Selector

3 inputs	5 Outputs
Mode Select	Normal LED
Gate Arm Up	Gate LED
Gate Arm Down	Card LED
	Gate Up LED
	Gate Down LED

- Mode Selections:
- Normal - barriers and gates operate normally
  - Gate Arm (GARM)- barriers down, buttons control the gate arm
  - Card Reader (CRD)- card reader active to control barrier and gate



Note: In Gate Arm mode the UP/Down Barrier buttons of the Ce-MBC or Ce-TS-VBS control the gate arm operation

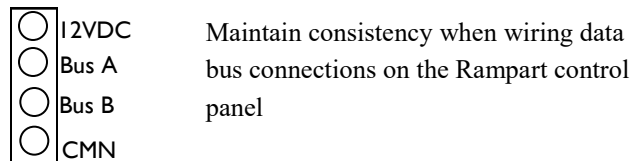
## Installation:

The manual modules are installed in the manual button control box. Each module is individually wired to its respective control buttons, LED's and switches

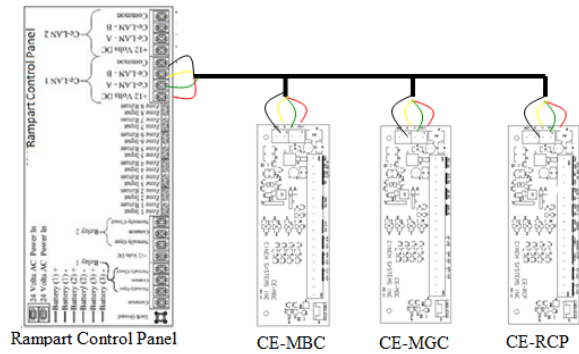
The modules can be mounted on the side or mounted in the bottom of the control box.

## Wiring:

The Ce-MGC is wired to the Rampart data bus and must maintain a constant communication with Rampart for proper operation.

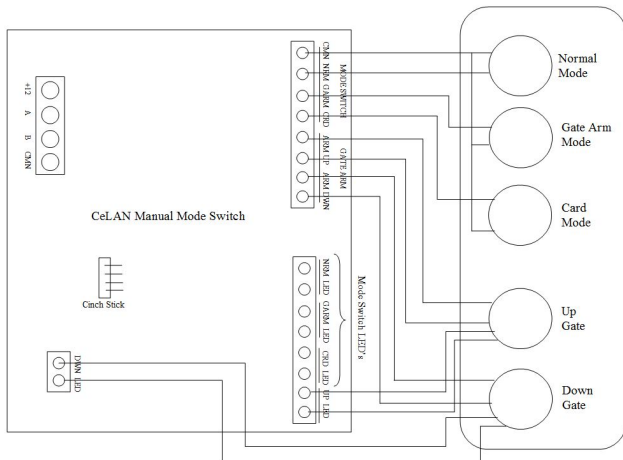


The Rampart data bus can be wired in a star, daisy-chain or home-run configuration, it is critical to keep all Bus A and Bus B wires consistent through-out the installation.



Daisy chain example of data bus wiring

**Ce-MMS Wiring:**



It is recommended to use LED lighted buttons to change modes. If there are other means of changing the mode another Ce-MMS or Ce-TS-VBS the lighted LED will follow the mode selected

CeLAN Connection	
12VDC	In from Rampart or other 12VDC
Bus A	Data bus A from Rampart
Bus B	Data bus B from Rampart
CMN	Common
Inputs	
Mode Switch	Common
	Normal
	GARM
	CRD
Gate Arm Up	Off and On
Gate Arm Down	Off and On
Outputs	
Normal Mode LED	LED Output
Gate Mode LED	LED output
Card Mode LED	LED output
Gate Up LED	LED output
Gate Down LED	LED output

6VDC LED Outputs

**Programming:**

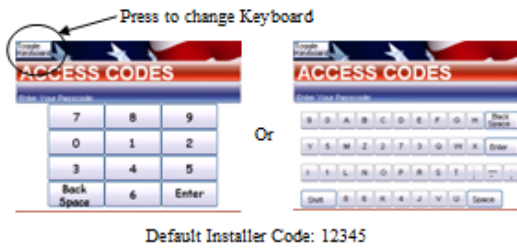
Programming is accomplished using a touch screen connected to the Rampart data bus. The touch screen must be enrolled into the system in order for programming to commence.

Once installation and wiring is complete the manual control modules must be enrolled in the Rampart system in order to complete programming.

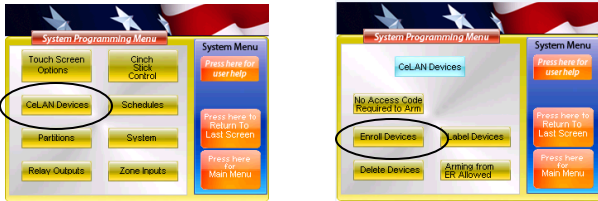
Enrolling modules:



Press the upper left followed by the upper right on the touch screen, a key board will display, enter your access code

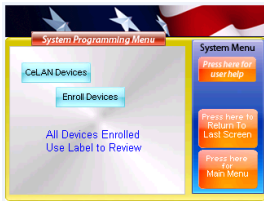


Once the access code is accepted select **CeLAN Devices** from the Main Menu then select **Enroll Devices**



During

this process all of the barrier control modules are enrolled into the Rampart control panel, when complete the touch screen will display "All Devices Enrolled"



Press Return to Last Screen to bring back the CeLAN Menu and select Label Devices\

Labeling CeLAN Devices:

Before programming devices make sure to assign text descriptors or labels to each device. This will make programming faster and easier.

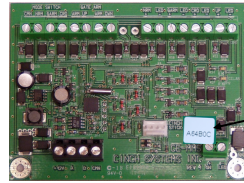
Each module has two areas of programming that must be accomplished for each module:

Barrier assignment - each module must be assigned to control a VBS module, during programming the system allows the user to select the VBS module to control

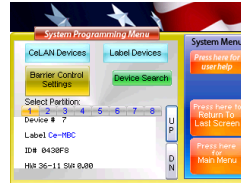
Priority setting - if the system to be programmed has master and remote control boxes and the master controller needs to be able to control the power of the remotes, this setting should be used

While in system programming enter the **CeLAN Menu** and **Label Devices**, using the Up/Down arrow find the MBC module to program.

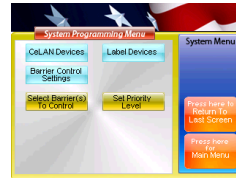
All CeLAN modules are assigned a unique ID# for reference, in the Label Device screen this number is displayed as ID#, the ID#'s are located on a label on each individual module.



Find the MMS to program in the **Label Device** menu and press the Barrier Control Settings button Use the **Up/Down** arrow to select the VBS Module the MMC will control



Press **Barrier Control Settings** to assign a barrier and set priority levels

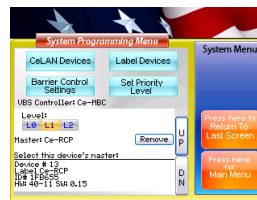


Press Select **Barrier to Control** to assign a VBS Module to the MMS

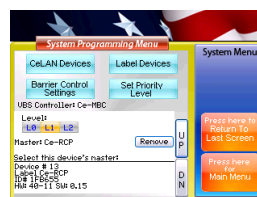


Use the **Up/Down** arrow to select the VBS Module the MMS will

When complete press **Last Screen** button to set Priority Level



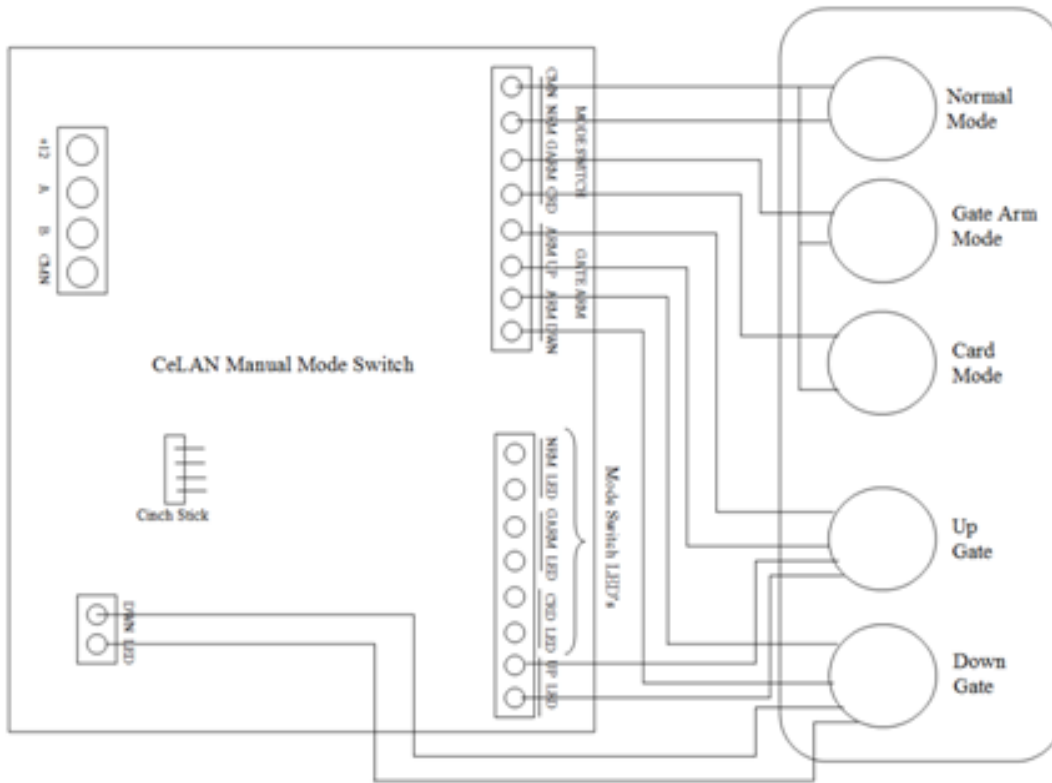
Set to Level-1 for remote string 1  
Set to Level-2 for remote string 2  
Set to Level-0 for Master



Use the **Up/Down** arrow to select the RCP Module the MMS



# MMS - Manual Mode Selector



CeLAN Connection	
12VDC	In from Rampart or other 12VDC power supply
Bus A	Data bus A from Rampart
Bus B	Data bus B from Rampart
CMN	Common
Inputs	
Mode Switch	Common
	Normal
	GARM
	CRD
Gate Arm Up	Off and On
Gate Arm Down	Off and On
Outputs	
Normal Mode LED	LED Output
Gate Mode LED	LED output
Card Mode LED	LED output
Gate Up LED	LED output
Gate Down LED	LED output