

HeLAN

# Manual Door Controller

**Product Part #  
He-MDC**

Datasheet:  
DS-He-MDC Rev A

HeLAN—High Speed Data Bus Network

Supervised Remote Control Station For Door Operators

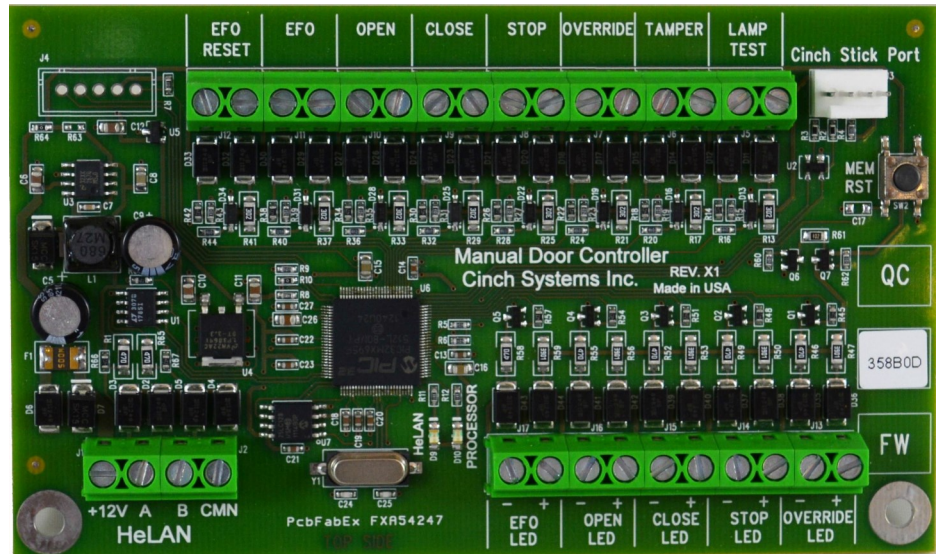
Lamp Test Input for System Integrity Check

customerservice@cinchsystems.com  
www.cinchsystems.com  
+1.763.497.1059

Listings:  
UL 325  
UL 991

## Flexible and Scalable

The MDC Module is a microprocessor based door control interface card for use with the Ce-Door-EZ control. The He-MDC provides discrete inputs for gate open, close, stop, override, emergency fast activations. In addition associated LED outputs support dynamic status indication. The module wires back to the Ce-Door-EZ with a single 4-conductor making for an easy installation



Supports bidirectional HeLAN communications. This exclusive technology surpasses ladder logic wiring methods eliminating wiring errors between the controllers for minimal installation time providing added value to turnkey installations.

Provides simplified board level troubleshooting with quick up time response eliminating time consuming diagnostics. Industry proven and reliable, circuit boards are easily and cost effectively exchanged for upgrades



## Specifications

**Input Power:** 12 VDC nominal (10 VDC minimum, 14 VDC maximum), 65mA (standby board only)

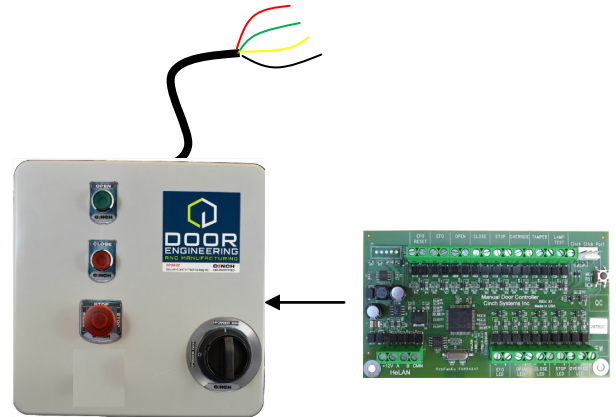
**LED Output:** 6VDC Compatible

**Board Dimensions:** 4.9 (L) X 2.9 (W)

**Operating Temperature:** -10° to 158° F (-23° to 70° C)

**Storage Temperature:** -10° to 158° F (-23° to 70° C)

**Maximum Humidity:** 90% relative humidity, non-condensing



### Inputs:

EFO Reset

EFO - Emergency Fast Operate

Open - Door/Gate open

Close - Door/Gate close

Stop - Door/Gate stop

Override - Override safety function

Tamper

Lamp test

### Outputs:

EFO LED

Open LED

Close LED

Stop LED

Override LED

